

Handbook for Incoming Exchange Students

1. Application
2. Arrival
3. Departure
4. Contact us
5. Information
6. Check list

2026.04 version

School of Medicine National Cheng Kung University NCKU

4F, Cheng-Hsing Campus, No. 1,
University Road, East District 701,
Tainan City, Taiwan ([Google Pin](#))

National Cheng Kung University Hospital

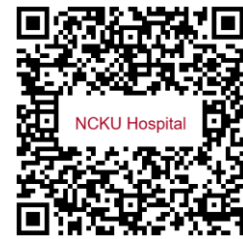
No. 138, Sheng Li Road, Tainan City
704, Taiwan ([Google Pin](#))



School of Medicine



College of Medicine



NCKU Hospital

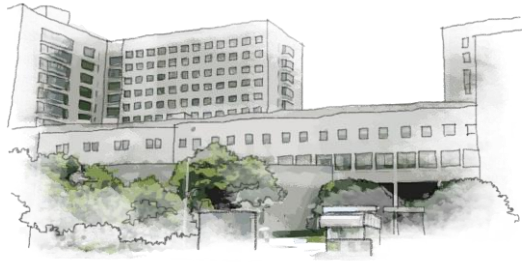


NCKU

NCKU

School of Medicine, College of Medicine





Application

1. Application form ([click](#))
 2. CV
 3. One recommendation letter
 4. Transcript
 5. Statement of purpose
 6. Photocopy of passport (bio page)
 7. Headshot photo
- Please submit the above documents 6 months prior to the beginning of the desired rotation period.
8. Vaccination form (in English) ([click](#))
- The signed/stamped NCKU vaccination and immunization.
 - Original copy of your vaccine receiving records and test results.

Before Arrival

Please email us the following:
(1 month prior)

- Original copies of the signed/stamped NCKU form, and the records and test results.

Arrival

1. Must bring: (**English version**)
 - (1) Original signed and stamped copy of the NCKU vaccination form
 - (2) Original vaccination records/test results.
 - (3) Copy of Personal overseas travel/medical insurance.
 2. Dress code: Business casual. White coat, scrubs, personal stethoscope, reflex hammer, pen light, etc. (If applicable)
- Meet the administration staff at the School of Medicine office at 9 am.
 - After registration, you will be led to the Hospital department to begin the elective rotation.

Departure

1. Google survey ([click](#))

Please submit the survey at the end of your exchange program.
Your feedback matters.



2. Meet the Chair of the School of Medicine
3. Return the ID badge
4. Elective Training Certificate

Contact

Ada Huang / Administrative coordinator
School of Medicine, NCKU
Phone: +886-6-235-3535 ext. 5018
Email: z10912010@email.ncku.edu.tw

Exchange information

1. Accommodations in Tainan ([click](#))
2. Weather Administration ([click](#))
3. Local traffic safety ([click](#))
4. NCKU campus map ([click](#))
5. Currency exchange
 - (1) approx. rate US\$1 to NT\$32 ([Bank of Taiwan](#))
 - (2) Where to exchange currency:
 - Banks in TPE and KHH airport within business hours.
 - TCB Bank ([click](#)) stationed at the NCKU Hospital (1F Inpatient Building)
 - (3) ATMs, please check with your bank if your bank card can withdraw NT\$ cash in Taiwan.



6. Transportation

- (1) From TPE / KHH airports:
 - Metro Taoyuan ([click](#))
 - Kaohsiung Metro ([click](#))
 - Public bus information is available at the airport arrival ([TPE click](#)) ([KHH click](#)),
- (2) High Speed Rail ([click](#))
- (3) Taiwan Railway ([click](#))
- (4) Local transportation in Tainan:
 - City bus ([click](#))
 - You Bike ([click](#))
7. Finding ROC Embassies and Missions Abroad at MOFA ([click](#)) in your home country for a **visa application, if applicable.** ([click](#)) Type: Visitor Visa.
8. **A SIM card** can be purchased at the Arrival area (lobby) after landing, with a few courier options and their packages to choose from.
9. **Living expenses** vary depending on personal living style, websites such as [Expatistan](#) or [Numbeo](#), for the cost of living comparisons.

Check List



- Application Form
- CV
- Recommendation Letter
- Transcript
- Statement of purpose
- Photocopy of passport
- Headshot photo
- *Vaccination and Immunization Form, and original test results.**

- Flight tickets
- Passport
- Visitor VISA (if applicable)

- Confirm accommodation
- *Personal overseas travel/medical insurance**
- Personal belongings, and scrubs, stethoscope, reflex hammer, pen light, etc. (if applicable)

(*mandatory)